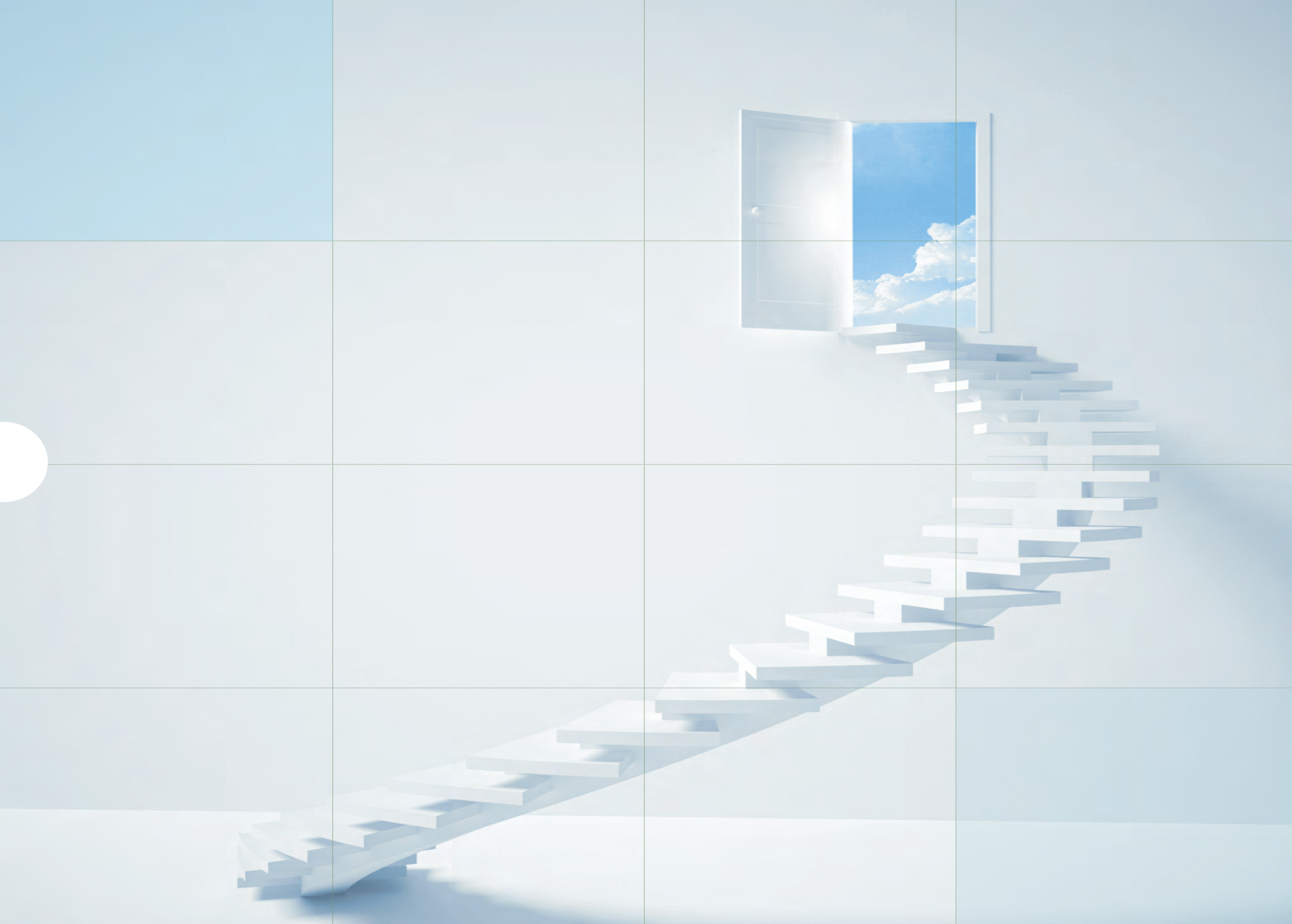




ENGINEERING YOUR VISION TO REALITY

 **ELOMATIC**





From the CEO's DESK



Dear Shareholder,

The Elomatic team consists of a diverse yet cohesive pool of experts with a feedback rich, dynamic environment that embraces change and learns from collective experiences. We thrive on innovative and creative problem solving skills that add value to our clients and their subsequent end users, and also add great intrinsic value to our own talent pool.

I take great pride in the team that we have nurtured at Elomatic. Every individual is passionate and self driven with a strong application bias and can work well in a team and as a leader based on the need of the hour. Their indomitable resolve to find solutions to our client's problems, big or small, helps in increasing the quality and productivity of their operations thereby giving impetus to high quality, affordable healthcare.

FROM THE CEO's DESK

Vision: To lead the revolution of life science engineering, quality & compliance and provide support to the industry worldwide in manufacturing of affordable healthcare products.

Mission: Elomatic strives to provide the right blend of innovative and client oriented solutions that significantly aid our clients in successfully handling their operations and the way they do business.

For an organization that is in the technology intensive field, I strongly believe that our prized asset is our Human Capital, for their intellect and diligence improves our business by leaps and bounds. As someone who oversees the operations, I have focused on ensuring that our talent is aligned with our vision & mission in order to evolve as a leader in the engineering & consultancy space for life sciences.

I challenge my talent to look beyond our current paradigms for new and better ways of working to meet our customer's expectations. My engineers are taught to make decisions analytically and largely without emotion. The culture at Elomatic is forged by hard work, learning, tough decision making and creative solutions to inculcate core values.

Our values drive our mission and act as a cornerstone to achieving our vision.

Empower : We provide a highly conducive and knowledge rich environment to our team in order for them to be able to deliver their best at all times to every project.

Persevere : Our Human Capital constantly strives to provide the best solutions and optimally performs under time or other project related constraints. Their passion is the force that converts dreams into reality and drives vision towards results.

Collaborate : Efficient and effective teamwork and interdepartmental work flow is critical to the timely and successful completion of a project and thus our collaborative effort & leadership is paramount.

Envisage : One of the top qualities of a consultant is to foresee and visualize the project constraints and plan in order to circumvent the same. Our emphasis lies in inculcating this value in every employee.

Being associated with a dynamic industry like the life sciences we can rarely control the timing of our opportunities but we are in complete control of our internal preparation in order to make most of these opportunities as and when they come by. For this we nurture a culture which is young, dynamic and constantly learning with an aim to perform optimally all the time, succeed together and celebrate our accomplishments.

I hope this brochure will provide an insight into the competencies of my team and our organization as a whole.

Warm Regards,

Abhay Ranjan

ELOMATIC^{in a} Nutshell



ELOMATIC IN A NUTSHELL

Elomatic Pharmalab is a turnkey engineering & consultancy company dedicated to the life sciences sector. It is a Joint venture between Elomatic Oy, Finland & Pharmalab, India. Elomatic Oy, founded in 1970, is a multidiscipline industrial engineering, consulting, and software design company from Finland and the Pharmaceutical & Biotech sector is the key focused SBU of their process division. Pharmalab founded in 1962 is an engineering company focusing on design & fabrication of process equipments for the Life Sciences sector.

Elomatic, India, since its inception in 2004, provides engineering & consultancy solutions starting from idea to commercialization. Broadly it includes engineering services like conceptual engineering, basic engineering, process engineering, detailed engineering, virtual facility, procurement assistance, documentation & validation, FAT & SAT services, site management and allied services like technology transfers, analytical testing services and regulatory guidance to name a few. The idea behind providing a vast array of services is to provide all solutions under one umbrella by which we help our client's right from the idea up to commercialization of the desired products.

Elomatic's talent pool is a mix of engineers & technologists who can understand the client's project needs starting from chemical synthesis or fermentation to the design and execution of facilities that are compliant with USFDA/EMA and other global regulatory requirements for GMP and GAMP CFR design. Elomatic offers its services for a complex multiproduct regulatory compliant facility to a simple formulation non-regulated facility. In addition to compliance, we have expertise in designing high containment & barrier technology facilities.

Elomatic, India is located in Mumbai and delivers under continuous technical supervision from & collaboration with Elomatic, Finland.

Elomatic Oy was the first Finnish engineering company to acquire ISO 9001 quality assurance certificate in 1991 whereas the Indian office has achieved similar Quality system certification ISO 9001:2008 in 2008.



ELOMATIC^{in a} Nutshell

ELOMATIC IN A NUTSHELL

Elomatic has put many years' efforts on research & development of tools for project management, design, documentation and quality of workmanship. These tools are extensively used in various process industries under our trademarks like CADMATIC™, eBrowser and EloDoc™. These tools are the cornerstone of Elomatic's life cycle concept.

Our consulting and engineering services cover the whole lifecycle of a plant, starting from preliminary feasibility studies to basic and detailed engineering up to and including start-up support. In troubleshooting we have several references of demanding problem solving cases, both process related, structural, and combinations thereof. In these cases we have been able to trace the root cause, plan, simulate, test the corrective actions, and then implement the corrections and verify the results.

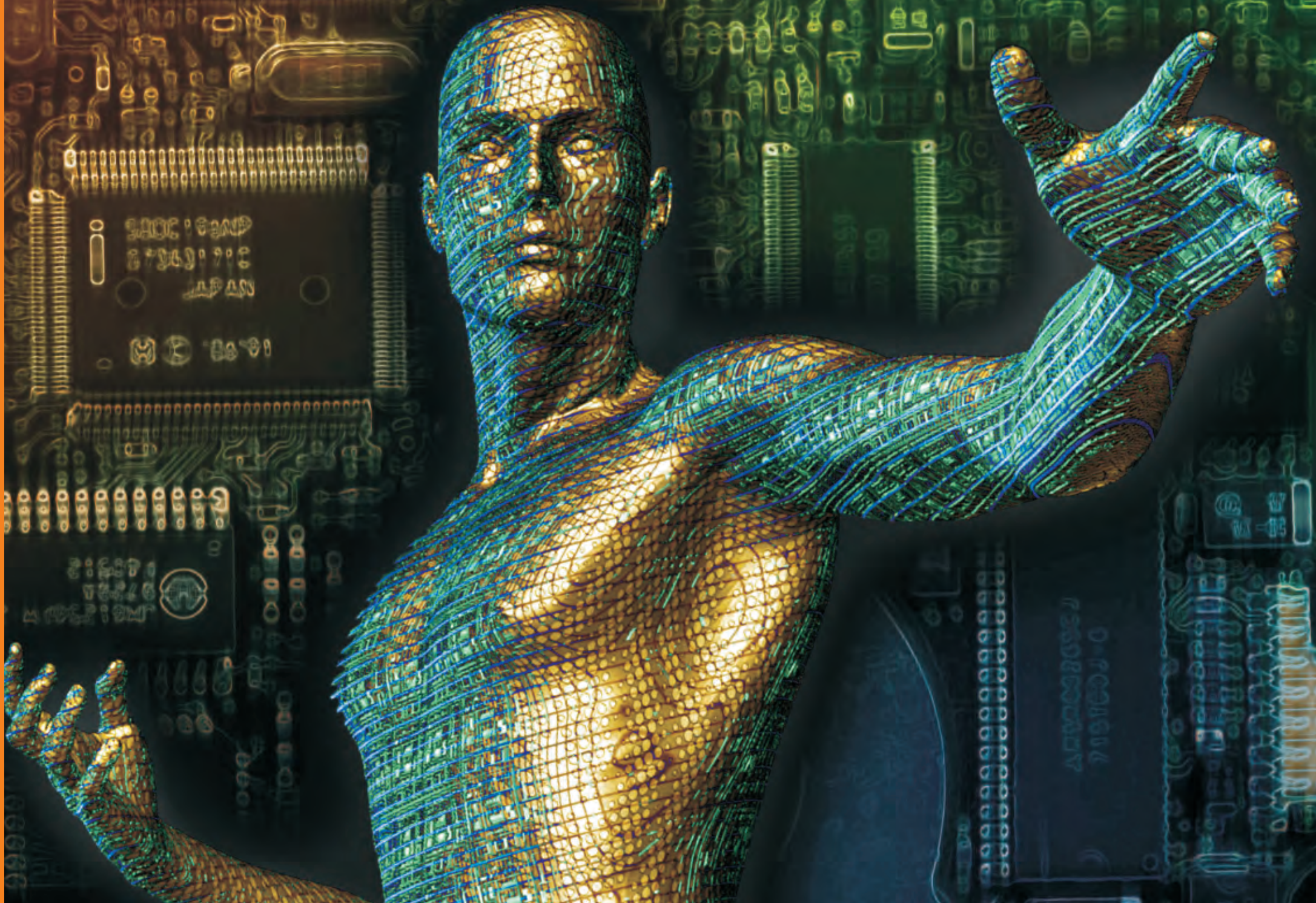
At the end of the life cycle we can offer consulting and engineering services for dismantling and demolishing a plant or equipment. Whether it is a one day consulting service or an integrative EPCM service package – We are confident and familiar with both and can execute the same with high proficiency and can even deliver complete Turn Key solutions.

We design, engineer & build facilities with due consideration to overall plant efficiency & compliance, utilizing cost & energy saving parameters thereby reducing the overall footprint and optimizing operating cost without any compromise on safety or final quality of the product.

We have had the privilege of working on and successfully completing regulated projects like Pfizer (about 30+ different projects in various locations) , Astra Zeneca, Torrent, Novo Nordisk, Astra Biotech Lab, Medipolis Oy, Biovitrum, Innobiologics, Zydus Cadila, Lupin, Serum Institute of India, Cosmos, GE Healthcare AB amongst many others in Europe, Asia & Africa.

In order to support our customers' success, not only during consulting and engineering projects, but throughout the whole life cycle of their operations, we have developed a set of professional services to meet this goal. In order to provide a better understanding of such services we have categorized them in this brochure under core competence, engineering methodology and beyond engineering describing their inherent purpose and benefit. Our services are designed to offer added value to all of our customers, no matter whether within our primary markets or in other territories.

CORE Competence



Homogenizer
1100x1500x1500

CORE COMPETENCE

Elomatic focuses on providing holistic engineering and consulting solutions to the Life Sciences industry worldwide. Our services range from providing solutions to non-sterile API plants to highly complex cell culture facilities and other ancillary spaces such as Process Development laboratories, Pilot Plants and Quality Control laboratories. With the advent of personalized medicine we are also well equipped to design state-of-the-art stem cell facilities and hospitals.

Process:

Process Engineering is a highly involved discipline in itself and we at Elomatic take great pride in providing feasible solutions to our clients that help in maximizing throughput of each unit operation, optimizing capacity and cycle time and minimizing operating expenditure and risk.

HVAC and Clean Room Design:

In the Pharmaceutical and Biotech industry, HVAC and Clean Room design are as important as the process design itself. With the focus being on maintaining high standards of air quality within the contained areas as well as that of the environment around the facility, HVAC and Clean Room design become critical to ensure the product is sterile while the environment is free of any chemical or biological burden that may be harmful to the surrounding habitat.

Electrical, Instrumentation & Automation:

Elomatic provides EIA (Electrical, Instrumentation & Automation) support to its client in order to align their operational requirements into a synchronized and cost effective automation configuration. The EIA engineers are proficient in designing complex process facilities with inbuilt flexibility. The team is competent to design, engineer and validate any facility with stand alone PLC automation or integrated system of PLC with SCADA or DCS including the in-built redundant systems. The system compliance is based on application and the market demand. However we are competent to meet GAMP 5 & CFR 21 part 11 guidelines.



CORE
Competence

CORE COMPETENCE

Project Management & Execution Tools:

Effective project management is the key to completion of a project within a stipulated time frame and an allocated budget. Elomatic efficiently uses Microsoft® Project to facilitate project management. Project Management helps in better management of activities and critical tasks, relatively more accurate milestone estimates, real time tracking of progress, highlighting deviation from planned timelines while also giving an explanation for the same.

At Elomatic, we follow the monthly reporting system wherein we provide our clients essential information on project progress as well as required information for the client's internal planning. This monthly reporting also helps in cash flow management and allocation of resources. The periodic review of activities helps in better communication between us and our clients.

CADMATIC™:

Provides state-of-the-art solutions for 3 dimensional design, data management, project reviews, site management & project communication. It is a highly intuitive software thereby reducing errors in design and provides accurate Bill of Quantities that helps in optimizing the procurement of piping material and other equipment. The software assists in providing virtual walkthrough the facilities that aid in visualizing the same even before they are physically built.

CADMATIC for engineering, procurement and construction

CADMATIC's powerful and user-friendly design tools improve engineering and design quality. Modeling of equipment and layout and routing of pipes, ducting, cable trays and steel structures is fast and well automated. Specification-driven routing and the automatic selection of materials and connection types as well as on-line collision control and automatic document production are some of the features that improve quality and ease engineering and allow engineers to concentrate on design rather than on laborious routine tasks.

eBrowser:

It is a data publishing tool that enables effective communication between all parties involved in plant investment projects by linking partners through the internet. Plant owners, designers, engineers, subcontractors and customers are all linked to a mutual 3D model allowing easy and concurrent project reviews and plant inspections, facilitated by the ability to virtually walk around the design area.

CORE COMPETENCE

CADMATIC has unique technology to utilize layouts and modules from old and other projects which makes creation of site and plant layouts very fast already in the concept and basic design phase. Routine tasks are performed automatically and reliably with automated document production, including e.g. fully automatic generation of isometric, spool and support drawings as well as all type of material reports (BOQ). An intelligent integration between process diagrams and schematics (PID), the 3D model, 2D documents and material reports is the guarantee for the validity of the design in all situation including design changes during the project. The 3D models are easy to edit and are furthermore smoothly linked to other software applications, such as laser scanning, stress analysis, material management and civil engineering furthering CADMATIC's scope of application. CADMATIC provides accurate information for the procurement and error free installation and for the maximization of prefabrication. This cuts out time consuming errors, leading to shorter building time and faster business operation of the plant.

CADMATIC for asset management of owner / operators

CADMATIC can be used effectively during the commissioning and operational phases of the plant. Plant operators and maintenance staff can receive training with the 3D visualization tools even before the plant is completed. The engineering database and 3D model can be integrated with other data management systems to create the total solution for the asset management of the plant.

eBrowser can be the core for data queries, visualizations, and work as a centralized user interface to find information from different sources. This includes integrations e.g. to preventive maintenance management, document management, inspection systems, risk analysis and analysis of process data. As CADMATIC is used throughout the entire life cycle of the plant investment the owner can effectively manage the whole process from pre-design to operation and maintenance with the help of eBrowser.



CORE COMPETENCE

EloDoc™:

It is Elomatic's proprietary Comprehensive Document Management System. This system helps in systematically storing all project related documents. Engineering projects typically represent one of the most challenging environments for a document management system; a huge number of documents are simultaneously created, updated and modified by several teams and individuals. Finding the latest versions of the right documents is, however, vital also during plant operation, for example in maintenance related issues or in renovations. In order to meet this challenge Elomatic has expanded its service scope and now provides versatile and comprehensive document management services for the whole plant life cycle. This is a highly secure software with user identification, access control and user rights. Tracking of documents and revisions therein is easy as the software provides document numbering and version management. It also has a provision to link the same to a central server for document sharing purposes. EloDoc enables accurate control over all documents e.g. drawings, layouts, specifications, lists, validation protocols, etc. EloDoc can be interactively linked with other systems, e.g. design systems and their viewers, maintenance and eBrowser systems.

EloDoc™ Benefits:

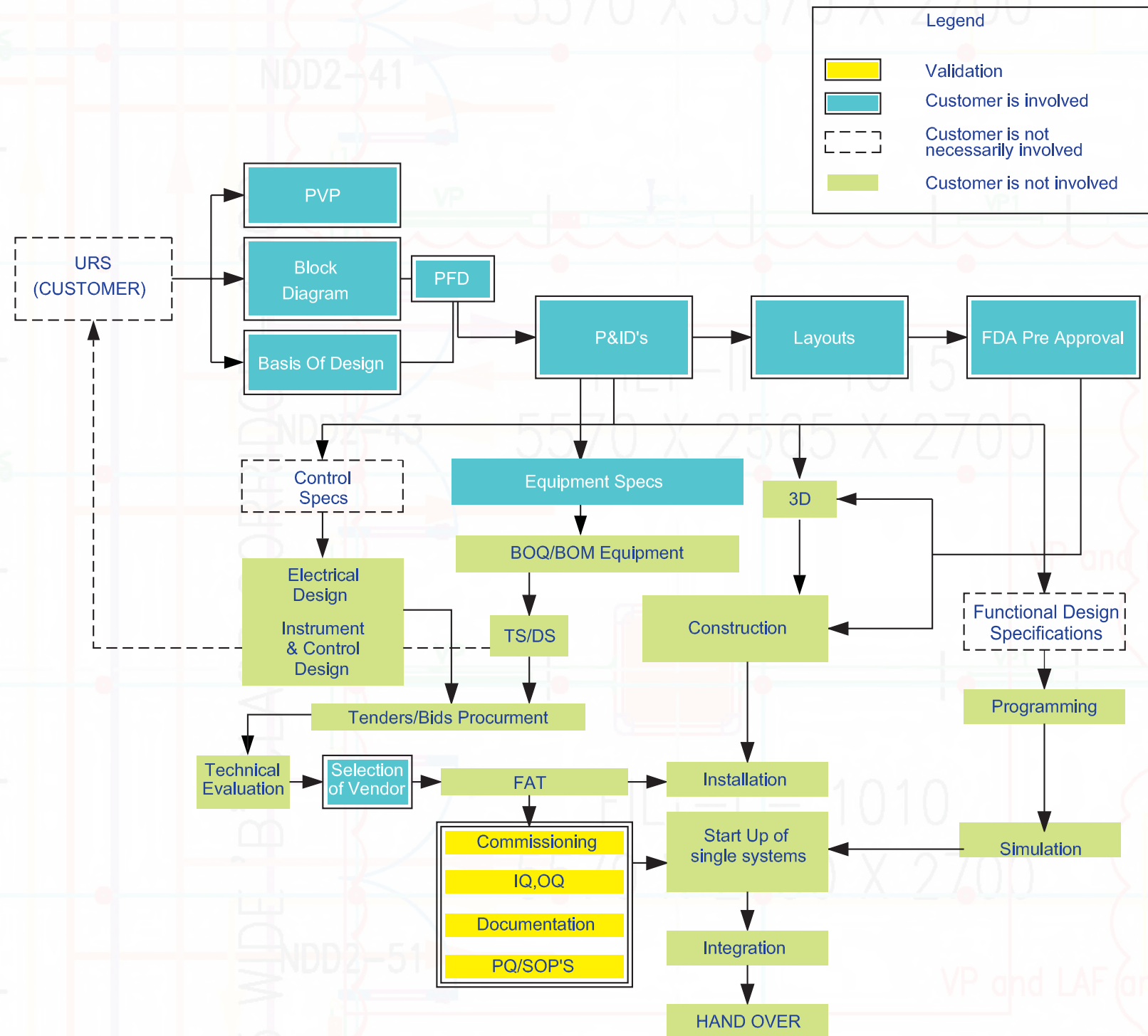


- User identification and access control
- Document version management
- Dynamic hierarchies
- Customization of document metadata
- Extensive queries
- Document ID management
- Complete integration with email
- Different database systems can be used (Access, SQL Server)
- Distributed file servers can be utilized, i.e. files reside where they are most used
- Basic web browser interface is available
- Documents' mass transfer to system from various data sources



ENGINEERING METHODOLOGY

ENGINEERING METHODOLOGY



ENGINEERING METHODOLOGY



ENGINEERING METHODOLOGY

CONCEPTUAL ENGINEERING



URS

Project & Quality Plan

cGMP Layouts

cGMP Flows

PFDs

Clean Room & AHU Zoning

Automation Philosophy

Budgetary Estimates

BASIC & DETAILED ENGINEERING



Architectural Drawings

Structural Drawings

HAZOP Studies

Equipment layout

Room Data Sheets

Technical Specifications

Tender Documents

Revised Budgetary Estimates

Project Schedule tracking

PROCESS ENGINEERING



P&IDs

Capacity & Cycle Time
Analysis

Equipment Rationalization

Utility design, sizing and
layout

Process Automation

PROCUREMENT ASSISTANCE



Vendor Evaluation

Tender Evaluation

Procurement Schedule

Cash flow management

Stage wise Inspection

Document Verification

QUALIFICATION & VALIDATION



Validation Master Plan

Risk Analysis

Impact Assessment

Qualification (DQ/IQ/OQ)

F.A.T. Services

S.A.T. Services

Preparation of SOPs

SITE MANAGEMENT & ALLIED SERVICES



Entire Project Management

CADMATIC – 3D virtual
walkthrough design

EloDoc – Comprehensive
Document Management
Software

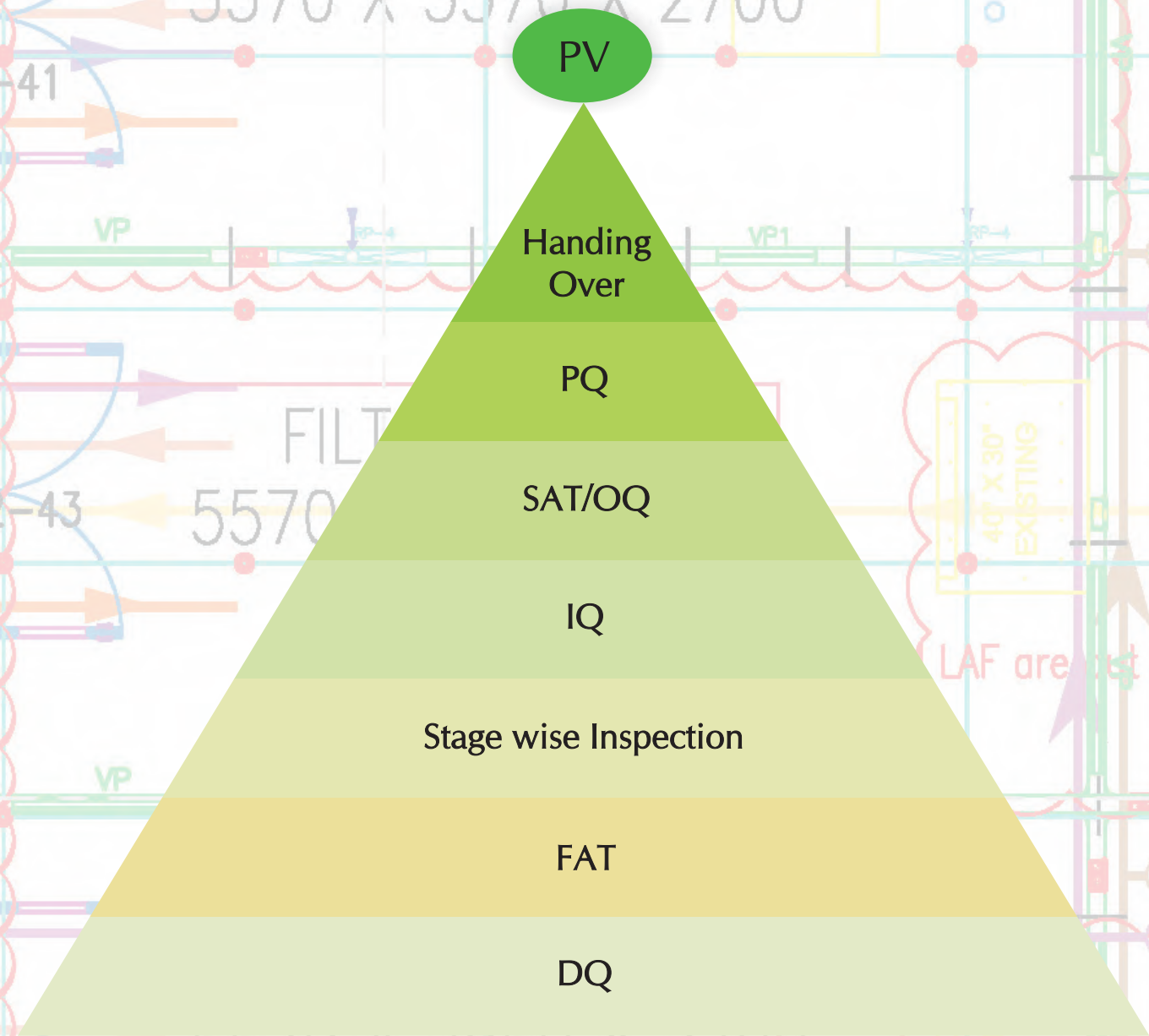
On site execution &
supervision support

Mock Audits

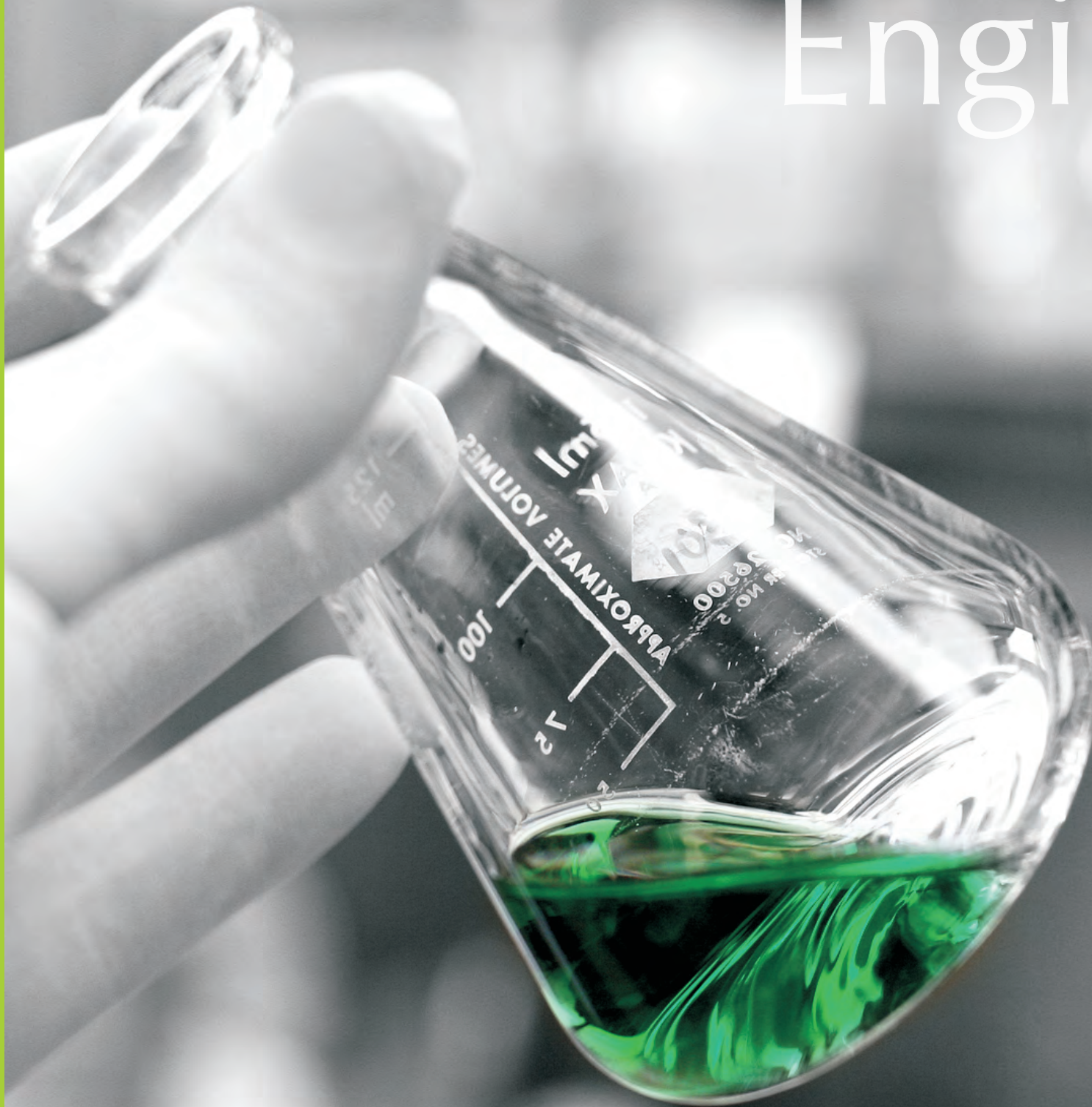
ENGINEERING METHODOLOGY



ENGINEERING METHODOLOGY



BEYOND Engineering



BEYOND ENGINEERING

“SUCCESS THROUGH PARTNERSHIP”

As part of our endeavor to provide end to end solutions to the life sciences sector, Elomatic today is in a position to facilitate transfer of technology, analytical testing services and 3rd party regulatory support through its globally renowned principals based in Europe, Asia and North America.

Elomatic has access to provide technologies for production of complex molecules such as monoclonal antibodies, therapeutic proteins, generic and novel vaccines, bio-enzymes, classical fermentation based products as well as dossiers for chemical synthesis based Pharma generics. Our analytical services range from providing Cell bank characterization to Neurovirulence testing and so on.

Elomatic has also made provisions for third party regulatory reviews through its principals that have vast knowledge in this field and have hands on experience through their prior association to globally renowned regulatory bodies.



SELECTED References

SELECTED REFERENCES

Elomatic Process has a wide customer base which covers both highly reputable international market leaders in their fields as well as small local technology start-ups, manufacturing companies in all sizes, public sector companies and municipalities. We are proud to have the privilege to serve each of them. We could easily cover all the letters of the alphabet, but will just mention a few well-known companies for whom we have completed repeat assignments. In alphabetical order they are: Astra Zeneca, Baxter, Cadila Pharmaceuticals, DSM, Eli Lilly, Fresenius Kabi, GE Healthcare, Intas Biopharmaceuticals, Kemwell AB, Lupin, PerkinElmer, Pfizer, Q-Med... up to ...Serum Institute of India, Sun Pharmaceuticals, Torrent Pharmaceuticals and Zydus Cadilla. We would love to describe all the projects we have completed in more detail, but many of them are confidential, which is something we want to honor without exception. Below you will nevertheless, find some examples of our reference projects.



SELECTED REFERENCES

Q-MED AB, Uppsala

A new manufacturing facility for aesthetics injections | All utilities produced in-house | 624 m2 of clean room area, class 7 and 8 areas (ISO 14644-1) | Executed in 2003-2004 | Conceptual, basic design, detail design, project coordination, specifications, construction supervision, commissioning and validation | European authorities approved factory for production spring 2005 | EU FDA accreditation - autumn 2005

Medipolis Oy, Oulu

GMP biopharmaceutical pilot plant | 400 m2, class A/B, C, D (ISO 5 - ISO 8) | Microbial facility | Executed: 2000 – 2002 | Scope - Basic design | Detailed engineering | Automation | Procurement | Installation supervision | Commissioning | Validation & Qualification

Pfizer Health

Production Facility for Tumor Therapeutic Antibodies (TTMA) | 260 m2 of clean room area, grade C and D areas | EU GMP Regulations | Executed 1996-1998 | Scope - Basic design | Detail design | Project coordination | Construction supervision | Commissioning | Validation

Biovitrum AB, Stockholm

Cell culture biotech pilot plant - Fermentation, Purification, Clean utility | Black utility systems | Qualification & validation | 380 m2 of clean room area, class 7 and 8 (ISO 14644-1) | Executed 2001-2003 | Basic and detail design, process and clean room design | Turn key delivery of the process automation (Siemens PCS7, Batch Flexible application, Data collection and management)

InnoBiologics, Malaysia

cGMP multiproduct biopharmaceutical facility | Cell culture & microbial facility | Executed 2006-2007 | Conceptual and Basic design, process and clean room design
Kabi Pharmacia, Sweden

API facility | Scope :

Process design & engineering | Layout & piping design | Procurement assistance | Installation supervision | Start-up

Amersham Biosciences AB, Sweden

cGMP upgrade of an existing production facility | 130 m2 of clean room area, grade B, C and D areas | EU GMP regulation | Execution 2004-2005 | Turn-key delivery | Conceptual, basic and detail design, specifications, construction supervision and validation of process, HVAC and clean rooms

Pfizer Health AB (legacy Pharmacia & Upjohn AB)

Production Facility for two-chamber Syringes (PFS) | Equipment specifications, procurement, FAT & SAT for equipment including Freeze dryers, design & validation of Clean room, Validation of clean utilities | 1960 m2 of clean room area, grade A, B, C and D areas | EU GMP regulations | Execution 1997-2002

Astra Production Chemicals AB, Sweden

Biotech Pilot Plant ~ Microbial & Eukariotic Culture | Basic and detail design, project coordination, specifications, construction supervision, commissioning and validation | 220 m2 of clean room area, grade C and D areas | EU GMP regulations | Execution 1998 – 2000

AstraZeneca AB, Sweden

Turn key delivery of the formulation unit | Concept, basic design, detailed engineering, automation, construction supervision, commissioning and validation | Production facility for Nexium IV | Execution : 2002 - 2005





KEY Profiles

At Elomatic, we know that our basic resource is our people. We treat our people as an asset and not as an overhead. Elomatic places great emphasis on developing and retaining our talent pool. All our efforts directed towards training, development, health and support of our employees is treated as an investment and not an expense. Our human capital's collective attitudes, skills and innovation contribute largely to Elomatic's performance and productivity.





Elomatic Pharmalab Consulting & Engineering Pvt. Ltd.,
Metropolitan, Plot - A/140, Road No. 23, Wagle Industrial Estate, Thane West - 400 604, India.
Tel: +91 22 2583 6146 | Fax: +91 22 2583 6165 | Email: info.india@elomatic.com | www.elomatic.com/india | LinkedIn: Elomatic Pharmalab